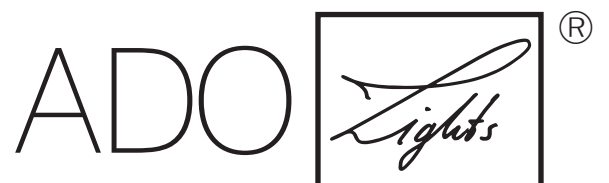


LED-GROUND-LEVEL SPOT

Recessed Luminaire



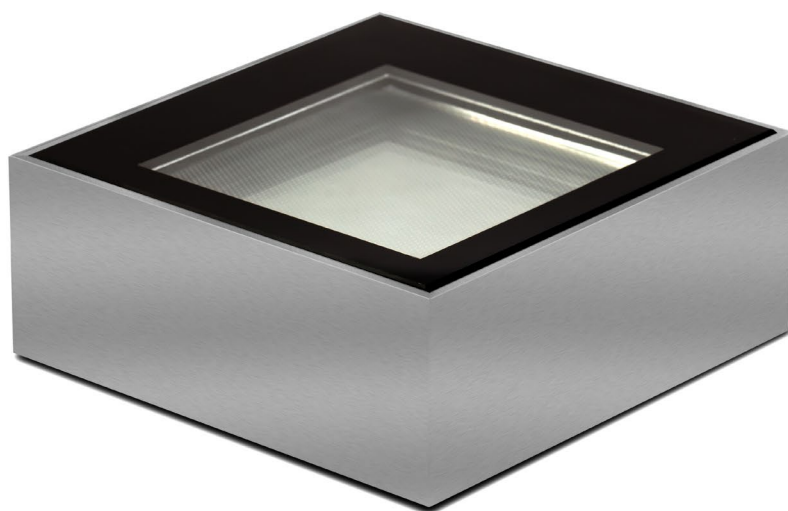
by TTC Timmler Technology

LED-GROUND-LEVEL SPOT

Recessed Luminaire

ADO 

PICTURES



LED-GROUND-LEVEL SPOT

Recessed Luminaire



BASE INFORMATION AND GENERAL TECHNICAL SPECIFICATIONS



LED-Ground-level spot | Spot on façades

This LED-Ground-level spotlight creates a very positive effect. It can be used to flood façades strikingly with light. Dark outdoor areas are a thing of the past. The LED-Ground-level spot is either buried flush with the ground or it can be visible like an elegant object. Maximum effect but still glare-free illumination: for residential buildings, villas, gardens and castles.

Merkmale

- For private residences, villas, parks, gardens, churches, castles, historic buildings
- Stainless steel housing for exterior use
- Weather-proof
- Beam characteristic symmetrical or asymmetrical
- Glare-free

DIMENSIONS [L X B X H] 150 x 150 x 120 mm | standard
optional length: 100–2,000 mm
optional width: 100–400 mm

POWER CONSUMPTION monochrome/white: 16 W
rgb/multicolour: 6 W

LUMINOUS FLUX Module efficiency 104 lm/W
Luminous flux 1,276 lm
Nominal luminous flux 1.604 lm

OPERATING VOLTAGE 24V DC

LIGHT BEAM ANGLE 120° or asymmetrical

SERVICE LIFE LED and EVG 40,000 hours at
70% of mean luminous flux

COLOUR TEMPERATURE monochr./white: 2,700/3,000/4,000 Kelvin
optional RGB

CRI CRI > 85

CONTROL INTERFACE with ballast compatible to any interface
e.g. DMX512, DALI, EIB etc.

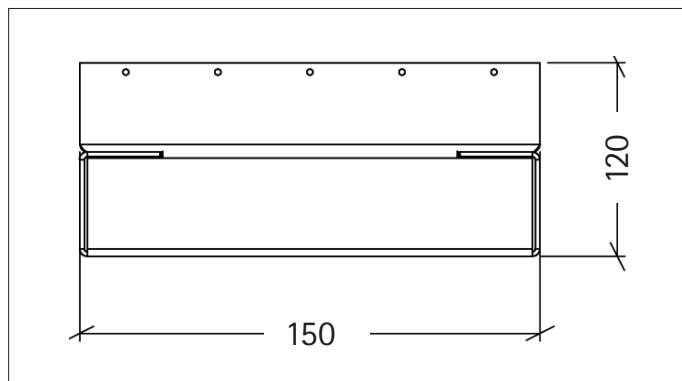
IP RATING IP68

CERTIFICATES CE, RoHS

LUMINAIRE HOUSING Stainless steel

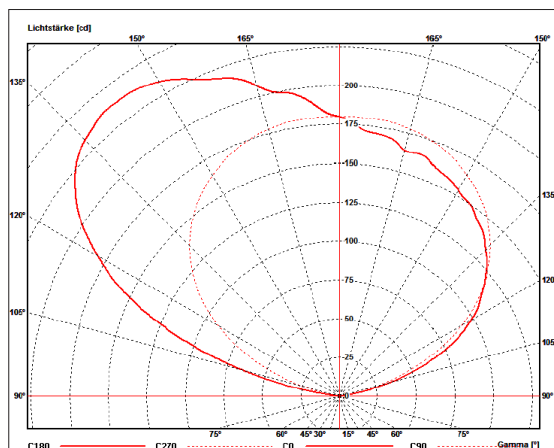
COVER VSG-Safety glass, drive-over design for
wheel loads up to 1.5 t

CONVERTER Overload protection
Overtemperature protection
Short-circuit protection

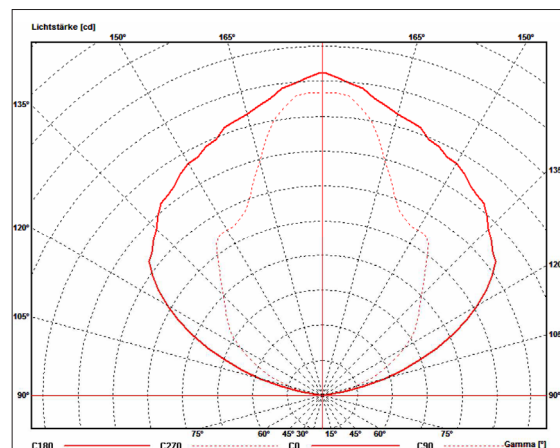


ILLUMINATION LEVEL

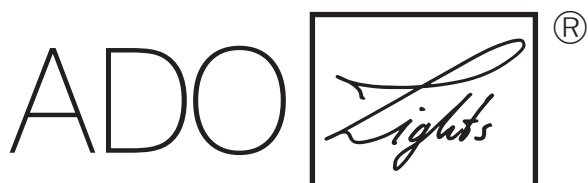
Light distribution: asymmetric



Light distribution: symmetric, bilateral light feed



TTC Timmler Technology GmbH
Christian-Schäfer-Straße 8
D-53881 Flammersheim [Cologne/Bonn]
T +49 2255 9212-00
F +49 2255 9212-99
E info@ado-lights.com
I www.ado-lights.com
www.led-luc.com



by TTC Timmler Technology

