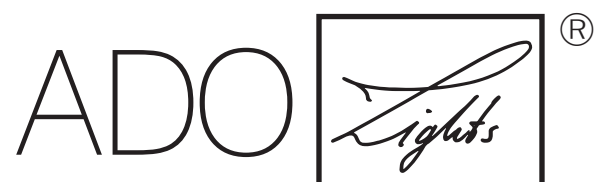

LED-DRAINLIGHT

LED-WallWasher integrated
in Drainage Channels



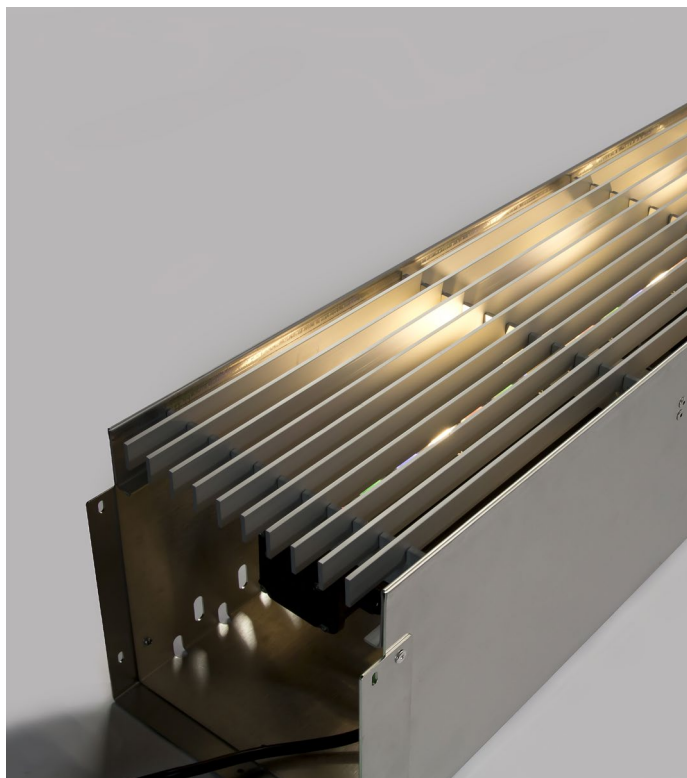
by TTC Timmler Technology

LED-DRAINLIGHT

LED-WallWasher integrated
in Drainage Channels

ADO *Lights*

PICTURES



LED-DRAINLIGHT

LED-WallWasher integrated in Drainage Channels



BASE INFORMATION AND GENERAL TECHNICAL SPECIFICATIONS



LED-Drainlight | Light + Glass or Grating

A forward looking solution, connecting aesthetic aspirations and practical requirements. For exterior applications: LED Drainlight combines stainless steel drainage channels with an impressive LED illumination of buildings.

LED Drainlight with grating cover

So beautiful, so useful: This LED Drainlight model allows rainwater to be reliably drained away through stainless steel draining channels. The integrated LED illumination, which has an angle that can be individually determined, works whatever the weather – come rain or shine. Building fronts are illuminated from the outside. Linear or cross gratings protect the construction.

LED Drainlight with glass cover

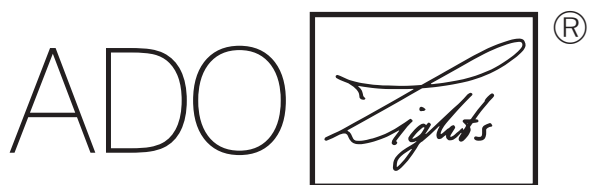
Highest possible protection: When LED Drainlight has a glass cover, neither leaves nor dirt can enter the stainless steel construction. However, rainwater and condensed water can drain away freely thanks to its drainage channels. The integrated LED light strip illuminates the façades above precisely at the desired angle. Another plus point is its simple maintenance.

Features

- For detached houses, villas, hotels, museums, parks, gardens, churches, castles, historic buildings
- Façade illumination out of the drainage system – or with glass cover – out of the ground
- Interactive integration into existing medial light systems
- Can be used in interior and exterior applications
- The light colours are dimmable and controllable using DMX

DIMENSIONS [L X W X H]	CHANNEL: 1,250 x 160 x 150 mm WALLWASHER: 1,212 x 68 x 76 mm
POWER CONSUMPTION	50 W
LIGHTING RANGE	Approx. 20 m
LIGHT BEAM ANGLE	Symmetric 15°/25°/35°/45° Elliptic 25°/50°
SERVICE LIFE	50,000 hours at 70% of mean luminous flux
COLOUR TEMPERATURE	White 3,000/4,000 Kelvin or multicolour RGB/RGBW
CRI	CRI > 85
CONTROL INTERFACE	DMX512, 4 channels
IP RATING	IP65
CERTIFICATES	CE, RoHs
INSTALLATION HOUSING	Stainless steel
COVER	VSG security glass, able to drive over up to 1.5 t wheel load; Linear or cross grating made of aluminium or stainless steel
MOUNTING	Gradient adjustable bracket [WallWasher]

TTC Timmler Technology GmbH
Christian-Schäfer-Straße 8
D-53881 Flammersheim [Cologne/Bonn]
T +49 2255 9212-00
F +49 2255 9212-99
E info@ado-lights.com
I www.ado-lights.com
www.led-luc.com



by TTC Timmler Technology

